



UP3D SCANNER

Ultra-high-speed Scan





UP3D is a high tech company and the few companies in the world that are capable of developing a full dental CAD/CAM solution including software and hardware, from scanning, designing, to milling.

UP3D remains dedicated to our customers' requirements for training and support as well as for innovative, high-quality products that perform reliably. We have native technical support to deal with any after-sales problems to ensure that you can use our products happily.

Becoming the Global Leader in an Exceptional Digital Dental Ecosystem

120+

Countries and regions served

11,000+

Equipment installations worldwide

200+

R&D engineers

35%+

High investment in R&D

Software Upgrade for Flexible Scanning

UP400 - Developed independently by UP3D, the UP400 is a high-speed dental desktop 3D scanner equipped with one-click intelligent add scan and efficient algorithms. It simplifies operational procedures and enhances work efficiency.

Its thin powder abutment solution supports precise restorations and seamlessly integrates with mainstream software, ensuring a flexible and efficient workflow. It's the ideal choice for dental processing.

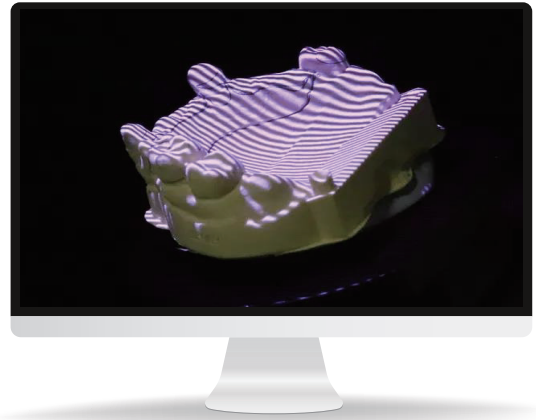


UNLEASH DENTAL CREATIVITY



High-Speed Precision Scanning Work Efficiency Upgraded

Equipped with dual cameras boasting 1.3 million pixels and high-speed algorithms, it delivers rapid, high-quality 3D data output. This perfect blend of work efficiency and precision is a must-have tool for dental laboratories.



Full arch: 11s



Unsectioned models scan: 14s



post&core scan: 33s



Triple tray: 70s



All-in-one: 20s



True color texture scan: 16s

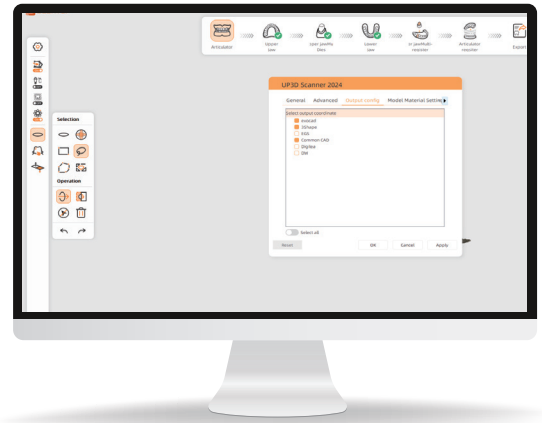
One-Click Intelligent Add Scan Simplify Processes, Save Time and Boost Efficiency

Featuring intelligent add scan capabilities, it automatically identifies and fills in missing parts of the model. With no need for manual angle searching, a single click precisely add scans, greatly simplifying the operation process and significantly improving work efficiency.



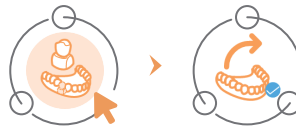
Open Format Compatibility Simplified and Flexible Workflow

Seamlessly integrates with mainstream CAD software like exocad, 3Shape, and DentalWings, exporting open-format files such as STL, PLY, OBJ, and U3M. This makes data processing more convenient, ensuring a flexible and efficient workflow.



UPSCAN Software Upgrade

Optimized UI layout and upgraded core algorithms make scanning faster and post-processing superior.



Flexible Scanning Steps Switching

Enables users to switch scanning steps on the fly without the need to restart or create a new order, simplifying the process.



Margin Line Marking

Post-scan, users can directly mark the margin lines in the software, reducing the time needed for dental design.



Abutment Filling for Holes

Automatically fills screw holes without the need for manual waxing, simplifying the modeling process.



True Color Texture

Supports color texture scanning, capturing clear markings such as hand-drawn brace lines and the edges of base teeth, accurately restoring models to improve design precision.



Thin Powder Abutment Solution

The thin powder abutment solution uses minimal powder to maintain the metal texture, enhancing scanning accuracy and avoiding issues like poor fit, providing reliable data support for precise implant restorations.

Technical Specifications

UP400

Dimension	355*268*384 (mm)
Weight	10kg
Cameras	2*1.3mp
Accuracy	8 microns
Projector	Customized blue-light, multi-color scanning
Interface	USB 3.0
Output Formats	STL, UM, PLY, OBJ
Power Supply	AC110-240V, 50Hz
Product Features	Digital model impression taking
Main Feature	High-speed scanning, intelligent add-scanning
Scan Speed	Full arch: 11s
	Unsectioned models scan: 14s
	Post&core scan: 33s
	Triple tray: 70s
	All-in-one: 20s
	True color texture scan: 16s





 www.up3ds.com

 info@up3d.cn

 0755-26983202

**Becoming the Global
Leader in an Exceptional
Digital Dental Ecosystem**